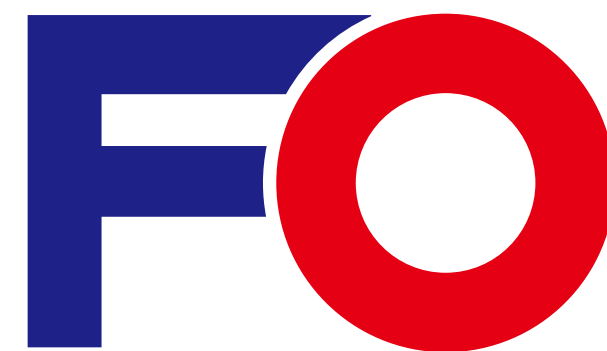




BRAND

to brand integrity of tre tree to win the market

【以诚信树品牌 · 以品牌赢市场】



BEARINGS

承诺与价值

符合国际标准的高品质轴承 专业的技术支持 及时的交货期 快速反应和优质服务

COMMITMENT AND VALUE

High quality bearings in compliance with international standard
Timely delivery

Professional technical support
Rapid response and top quality service



GENUINE PARTS

PROFESSIONAL MANUFACTURING

FO 轴承技术资料
BEARING

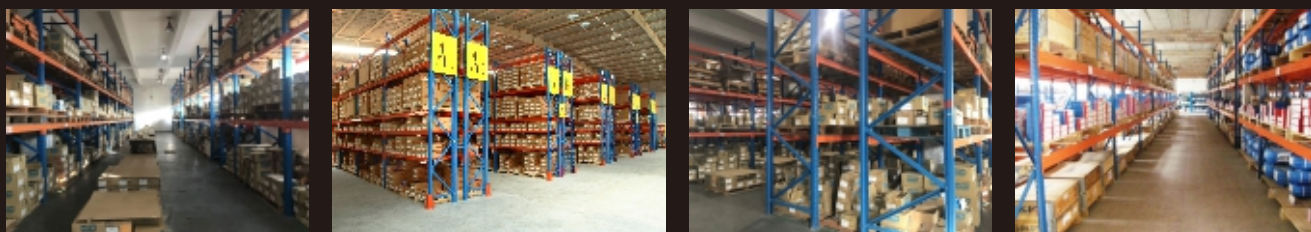


DIRECTORY目錄

企业文化 Corporate Culture	005-006
企业简介 Introduction	007-008
人才观 Talent Strategy	009-010
组织机构 Structure	011-012
质保体系 Quality Management System	013-014
生产实力 Production Strength	015-016
应用领域 Applications	017-018
产品目录 Product Contents	019-020
轴承知识 Bearing knowledge	035-036



GENUINE PARTS PROFESSIONAL MANUFACTURING



Company principle: Quality first, reputation first

Business philosophy: Sincere cooperation; creditable management, genuine goods at a fair price, top quality service

Enterprise goals: Sophisticated manufacturing and rapid development

Core values: Customer orientation; staff development, advocating cooperation and encouraging innovation



BEARINGS CORPORATE CULTURE 企业文化

公司宗旨：质量第一 信誉至上

经营理念：真诚合作 诚信经营 货真价实 优质服务

企业目标：制造精良 发展迅速

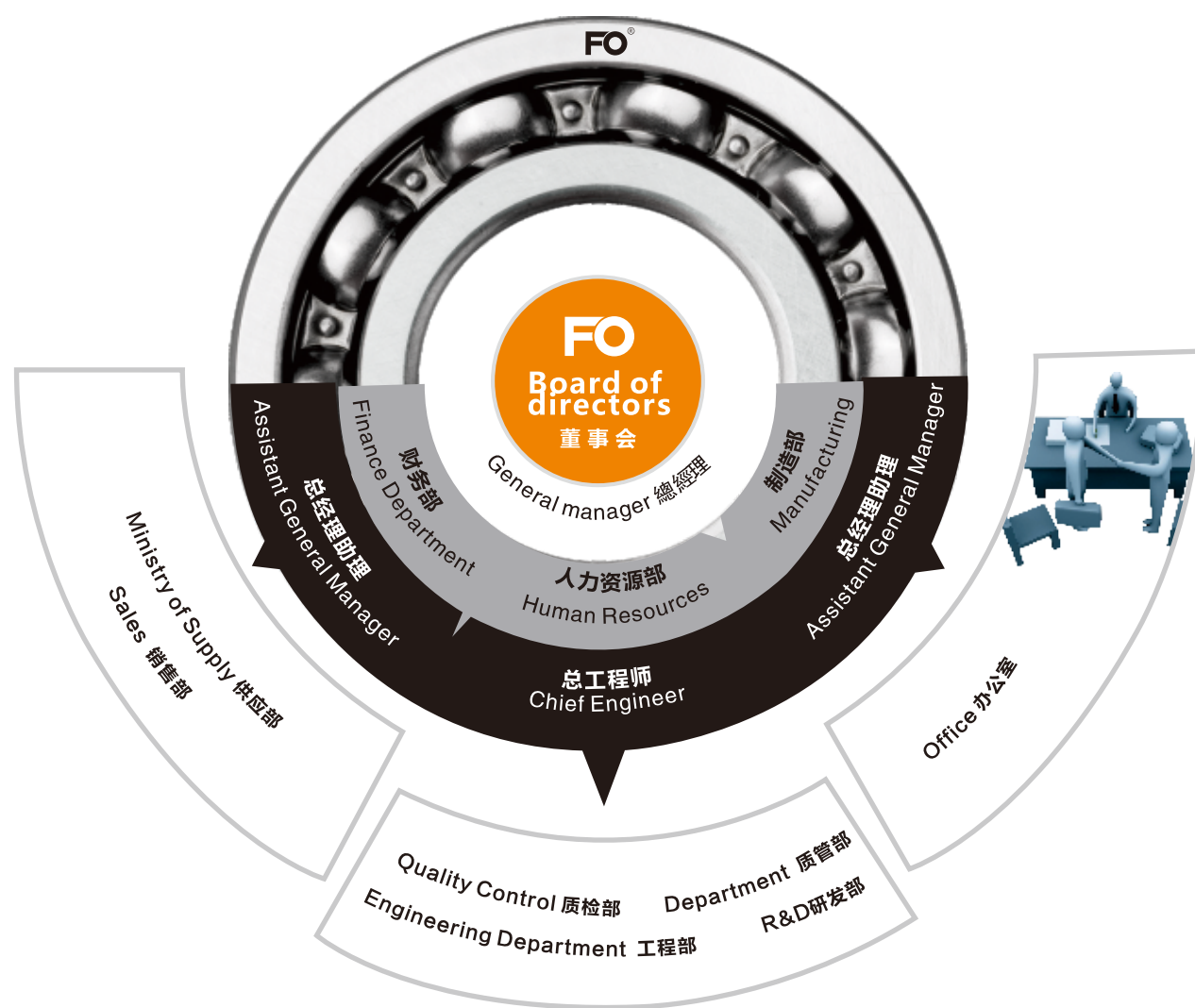
核心价值：关注客户 发展员工 崇尚合作 鼓励创新

GENUINE PARTS

PROFESSIONAL MANUFACTURING
BEARINGS

ORGANIZATION
MANAGEMENT SYSTEM

组 织 管 理 体 系



EFFECTIVE COORDINATION OF THE OTHER POWERS

We are good at listening,
We are convinced that everyone needs and can realize their full potetial.
Therefore,
We are willing to actively provide for each employee requied to support and help,
through effective organization system,
the spirit of giving,
create and unite to form an excited team spirit force,
participate in the competition,
employees and the company jointly growth.

权责对等 高效协同

我们善于倾听，我们深信，
每一个人都需要而且能够充分发挥其潜力。
因此，我们愿意积极为每一个员工提供所需要的支持和帮助，
通过有机的组织体系，
把大家的奉献精神、创造精神激发并汇合成一股团队力量，
参与企业的竞争，使员工与企业共同成长。



QUALITY ASSURANCE SYSTEM

质 保 体 系

OUTSTANDING 卓越源自品质
COMES FROM QUALITY

GENUINE PARTS
PROFESSIONAL MANUFACTURING



Note: As many of the regulations and standards, this figure is only lists part of the process
备注: 各项规定及标准太多, 此图纸罗列部分工序



GENUINE

PROFESSIONAL

GENUINE PARTS
PROFESSIONAL MANUFACTURING



APPLICATIONS

应用领域

QUALITY BRAND

品质铸就品牌



DEVELOPED IN **FO**
HIGH-END TECHNOLOGY

GENUINE PARTS

PROFESSIONAL MANUFACTURING

深沟球轴承

FO备有品种繁多的深沟球轴承。

深沟球轴承也是轴承中最普通的种类，应用于很多领域。

DEEP GROOVE BALL BEARINGS

FO manufacture a full range of deep groove ball bearings.
These bearings are the most common type and used for a wide variety of applications.



SELF- ALIGNING BALL BEARINGS

This type of ball bearing is recommended when alignment of the shaft and housing is difficult and the shaft may flex. The outer ring has a spherical raceway and its center of curvature coincides with that of the bearing; Therefore, the axis of the inner ring, balls and cage can deflect to some extent around the bearing center. Pressed steel cages are usually used. Since the contact angle is small, the axial load capacity is low.

调心球轴承

外圈的滚道为球面，其曲率中心与轴承中心一致。因此，内圈、球、保持架可以在轴承中心周围自由旋转，具有调心性。适于轴和外壳对中心困难，轴易出现挠曲的传动轴等用途，因为接触角小，所以轴向负荷能力也小。一般使用冲压保持架。

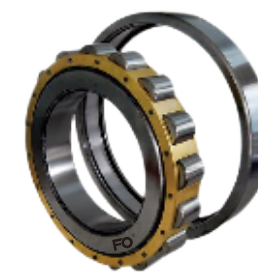


GENUINE PARTS

PROFESSIONAL MANUFACTURING



CYLINDRICAL ROLLER BEARINGS



In Bearings of this type, the cylindrical rollers are in linear contact with the raceways. They have a high radial load capacity and are suitable for high speeds.

There are different types designated as NU, NJ, NUP, N, NF (for single-row bearings), NNU, and NN (for double-row bearings depending on the design absence of side ribs).

圆柱滚子轴承

圆柱滚子与滚道为线接触的轴承。负荷能力大，主要承受径向负荷。滚动体与套圈挡边摩擦小，适于高速旋转。

根据套圈有无挡边，分有NU、NJ、NUP、N、NF等单列轴承，及NNU、NN型双列轴承。

GENUINE PARTS

PROFESSIONAL MANUFACTURING



SPHERICAL ROLLER BEARINGS

Spherical roller bearings are designed to manage high radial loads even when misalignment, poor lubrication, contamination, extreme speeds or critical application stresses are present.

调心滚子轴承

调心滚子轴承设计用于高径向负荷或甚至伴随有偏心，润滑不当，有杂质、转速极高或极高压力的环境下。



ANGULAR

CONTACT BALL BEARINGS

角接触球轴承

FO的各种角接触轴承所采用的设计，可满足生产厂家越来越高多样化的要求。
角接触球轴承有接触角度，因此，可同时承受径向载荷和单方向上的大的轴向载荷。

ANGULAR CONTACT BALL BEARINGS

The FO range of angular contact ball bearings has been designed to meet the increasing demanding requirements of original equipment manufacturers.

Since they have a angular contact, therefore, they can bear the radial load and large axial load in one direction at same time





TAPERED ROLLER BEARINGS

Conical roller bearings consist of four interdependent components:
the cone, or inner ring; The cup, or outer ring;
the tapered rollers, or rolling elements;
and the cage, or roller retainer.

The tapered angles allow the bearing to handle a combination
of radial and thrust loads.

The Steeper the cup angle,
the greater ability of the bearing to handle thrust loads.

圆锥滚子轴承

圆锥滚子轴承由四个不可分割的部件组成，它们是内滚道（内圈）、外滚道（外圈）、圆锥滚子（滚动件）及保持架（滚子护圈）。锥角使轴承承受径向和轴向的复合载荷。锥角的角度越大、承受推力负荷的能力就越大。

GENUINE PARTS

PROFESSIONAL MANUFACTURING



THRUST

BALL BEARINGS

Thrust ball bearing can provide superior performance in high speed applications and easy to assemble. This bearing type provides axial stiffness, but it is not recommended to the applications with radial load.

推力球轴承

推力球轴承在高速应用场合能提供优越性能，且便于装配。该轴承类型提供轴向刚度，但不推荐用于存在径向负荷的应用场合。

GENUINE PARTS
PROFESSIONAL MANUFACTURING